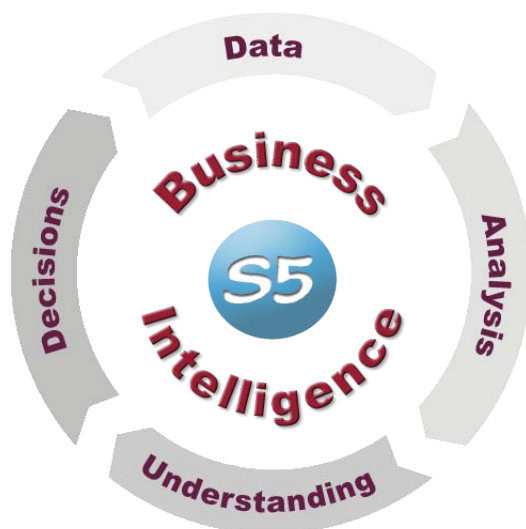


## " S5 Integrates your Business Information ... "

### ■ ERP with Business Intelligence

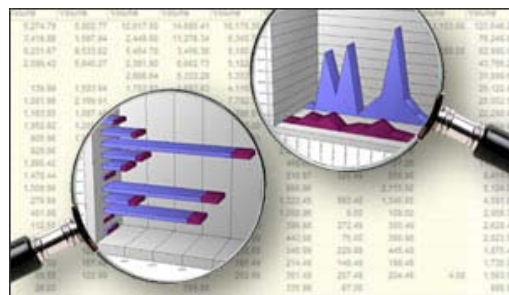
De Facto Software's ERP solution integrates all your Financial, Logistics and Customer Relationship Management information into the same system. S5 ERP enables you to accurately and efficiently capture and process all your transactional business data.

With all your company's information in one consistent and coherent system, S5's powerful Business Intelligence module enables you to transform that data into instantly available and meaningful information.



" ... Business Intelligence  
Unlocks its Value "

S5 Business Intelligence extends this and provides the key to unlock that data's value to your company. Using S5 Business Intelligence, you can easily convert that data into meaningful information. Powerful tools give you precise understanding of your business activities, enabling more informed choices and decisions by all your staff, not just management.



### Transforming Raw Data into Valuable Information

S5 Business Intelligence delivers the information you need, when you need it, in easy to understand formats.

In a business environment that is consistently demanding, you need to take quick effective decisions, you need accurate and timely information, you need S5 ERP with Business Intelligence!

### Find Out More ...

Call us now to learn how de Facto S5 with Business Intelligence can help your company :

 **Call Us Now ...**

Tel: 01473 417 200

## Transforming your Data

de Facto S5 ERP integrates all your business processes and information into one consistent and centralised system.

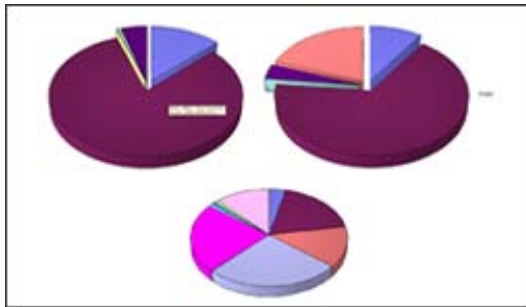
S5's Business Intelligence module is a quantum leap forward. With BI, you can gain real insight into the business information you already have by allowing access to this data in easy to use formats.

Customer	Year		Grand Tot
	2010	2011	
AB001 - Alliance des Vignobles du Beaujolais	12.00	1.00	14.00
AB001 - Everyone net Ltd	8.00	2.00	10.00
AC001 - Gaseung Leisure Centre		2.00	2.00
AD001 - Network Corporation	1,102.45	1,008.99	2,139.44
AD001 - Network Technology Group Ltd	91.00	79.00	170.00
AE001 - Ever Corporation	991.48	1,041.48	2,032.96
AF001 - Dig Europe Ltd		17.00	17.00
AG001 - Exocore Technologies Ltd	323.99	1.00	324.99
AH001 - Nursey & Son Ltd	227.99	415.48	643.47
AI001 - Digital Outreach International	331.49	305.49	636.98
AJ001 - Bedford Lodge Hotel	213.41	99.99	313.40
AK001 - Varna Semiconductor Ltd	88.00	109.00	197.00
AL001 - Angle Head & Hydraulics	1.00		1.00

## Analysis and Understanding

The S5 Business Intelligence module enables you to create reports based on 'Cubes' of data and then drag and drop information into the required format. It combines leading edge technology into one easy to use, yet powerful tool.

With advanced technology 'under the hood', S5 Business Intelligence gives you the tools you need to analyse and understand.



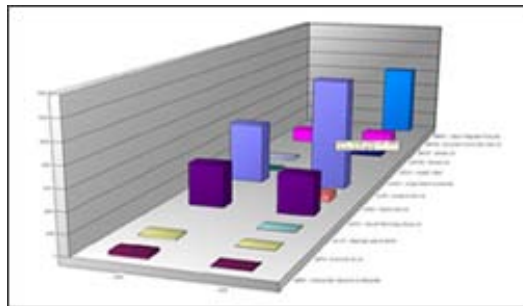
Business Intelligence helps you to establish the key factors in the success and growth of your business, and identify new strategies which will enable you to keep one step ahead of the competition.

## Easy Cost Effective Deployment

Business Intelligence is one of a number of optional modules which can be purchased to extend the functionality of the core de Facto S5 ERP system.

BI comes with a standard cube of data, reflecting Sales Analysis information; along with a number of pre-built Reports. Access and security is maintained by a variety of means; the author of a 'report' can share a created 'report' with individual users or a group of users (e.g. all sales people).

Additionally, Data Level security can be maintained, which allows a report to be shared across a number of users with each user only seeing data applicable to them. Further Security is available at measurement level (column level) which prohibits certain data from being displayed (e.g. only certain users see the margin details).



## Technical Requirements

Business Intelligence uses the following base components:

- Microsoft SQL Server and Analysis Services
- Microsoft Office

Any BI user will require Microsoft Office 2000 upwards.

## Find Out More ...

Call us now to learn how de Facto S5 with powerful Business Intelligence can help your business :

 **Call Us Now ...**

Tel: 01473 417 200

